



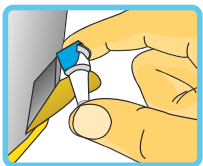
**SAFE
FAST
RELIABLE**



Simple everyday use with **SAFE FINE**

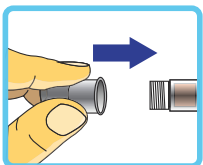
Directions for use and safety instructions for your **SAFE FINE** insulin pen needle box

Please read the safety instructions and directions for use of your needle box and your insulin pen carefully and thoroughly. Inappropriate handling can constitute a health hazard.



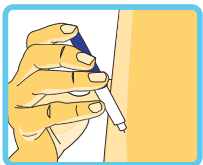
Removing the insulin pen needle

Open the flap on the bottom of the box and remove a sterile packaged insulin pen needle.



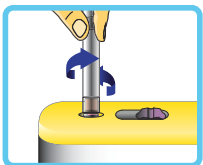
Attaching the needle to the insulin pen

Remove the paper seal. Screw the needle onto your insulin pen, as shown by the specialist or doctor. Remove both protective caps.



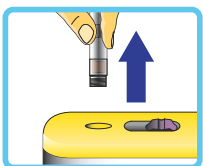
Insulin administration

Use your insulin pen as recommended by the specialist, doctor or pharmacist.



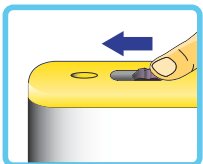
Removing the needle

Insert the insulin pen into the ejection device as far as it will go. Detach the used needle from the insulin pen by turning it.



Lifting off the insulin pen

When you lift off your insulin pen, the insulin needle will remain in the patented **SAFE FINE** ejection device.



Disposing of the needle

Push the patented safety mechanism on top of the box in the direction of the ejection device. The used needle will remain in your **SAFE FINE** needle box, safe and inaccessible.

Proper use

Only use the **SAFE FINE** needle box to dispose of the insulin pen needles included in the scope of supply.

The **SAFE FINE** needle box is not a toy. Keep out of the reach of children.

A needle box damaged due to being dropped, for example, is no longer safe and must be disposed of.

Insulin pen needles are intended for single use only. After single use the needles must be disposed of as described, for hygiene reasons and to protect against infection.

Use your insulin pen as shown by the specialist, doctor or pharmacist. Inspect your insulin pen regularly as directed by the manufacturer.

Disposing of the **SAFE FINE** needle box

The needle box filled with the used insulin needles can be disposed of with the household waste.

Manufacturer of the **SAFE FINE** needle box is



Pharmadia Ilac San. ve Tic A.S./ Turkey

If you have any questions about your **SAFE FINE needle box,** our team will be glad to assist you:

hjs diagnostics

D-79395 Neuenburg
Tel: +49 (0) 7634 552 444
Mail: info@hjs-diagnostics.de
Web: www.safefine.de

Quality certification of your **SAFE FINE** needle box



Trained specialists, your doctor or pharmacist will be glad to help you to select the **SAFE FINE** needle length most suitable for you.



4mm - SAFE FINE
4 x 0,23mm (32G)
Article no.: **NB-1-04**
PZN: **11096428**



5mm - SAFE FINE
5 x 0,25mm (31G)
Article no.: **NB-2-05**
PZN: **11096440**



6mm - SAFE FINE
6 x 0,25mm (31G)
Article no.: **NB-3-06**
PZN: **11096457**



8mm - SAFE FINE
8 x 0,25 mm (31G)
Article no.: **NB-4-08**
PZN: **11096463**



12mm - SAFE FINE
12 x 0,33 mm (29G)
Article no.: **NB-5-12**
PZN: **11096486**